



 **ServLife**  
2013 ANNUAL REPORT





# WHAT WE DO

ServLife International propels reconciliation and justice by **building global community** to **plant churches**, **care for children** and **fight poverty**.

Dear Friends,

It is with a grateful heart and deep joy that we share this 2013 Annual Report. It was an amazing year, and we are excited to share some highlights with you.

Matthew 11:30 was a guiding verse for me and ServLife in 2013. Jesus declares, "For my yoke is easy and my burden is light." It is a stark reminder that this is not my ministry, not your ministry, not ServLife's ministry, not our international directors' ministry, but God's ministry. He carries the weight on his shoulders. And he is good at it.

While God carries the weight and responsibility, we are privileged to partner with him, as well as you and international workers to see the love of Jesus made known in real and tangible ways. From 300 children receiving education and care, to 170 pastors growing the church, to 30 families in micro-finance living into hope and empowerment, you have played a critical role in this work, and I am grateful for your support in accomplishing these goals.

Our primary focus is on our international programs, but I want you to know that things here in the US are going well also. 200 new donors have joined us, and 75% of our 2012 donors have remained with us. 79% of our funds go to programs overseas, and we recently achieved GuideStar Gold status. All this to say that ServLife is committed to organizational health, accountability and growth.

Your commitment, faithfulness and generosity continue to have a deep impact in God's kingdom in this world. We are grateful for your support, and your participation in the restoration of hope among the hopeless.

Thank you,

A stylized, handwritten signature in black ink, appearing to read 'A. Nevins'.

Adam J. Nevins  
Executive Director





# WHERE WE WORK

## NEPAL

is a small, diverse country of 30 million people, best known for the majestic Himalayan Mountains. Radical change has occurred in the last decade, as the longstanding oppressive monarchy fell, giving way to a democratic republic. Like India, the influence of the caste system is pervasive, resulting in extreme poverty and persecution. Additionally, the country is plagued by one of the highest infant mortality rates in the world, a weak education system, large-scale economic struggles and a weak infrastructure. Despite the fact that Christians are heavily persecuted, Christianity is steadily growing in Nepal, making up about 3% of the population. Everyday, the ServLife staff sees the gospel transforming individuals, families and entire communities throughout the country.

## INDIA

is an expansive, beautiful and complex country of 1.27 billion people. Over the last twenty years, unprecedented economic growth has boosted millions out of poverty, and investments in education and clean water have brought about encouraging social progress. Even with these positive signs, significant problems linger, with the neglect and abuse of women and children being one of the most daunting. While Hinduism dominates India, Christianity has a small but growing presence, making up 2-3% of the population. Despite the fact that north India is one of the most difficult areas in the world for Christians, God has steadily changed countless lives over the past 20 years.

## THE REGION

ServLife began 20 years ago deep in the heart of the 10/40 window in north India. In 2003 we expanded into Nepal, launching children's homes and eventually church planting and micro-finance programs. We operate primarily in remote villages with unreached people groups, where the average income is about \$1-2 per day. ServLife partners with local leaders in India and Nepal to address systemic issues of poverty as well as investing in the future infrastructure to empower a stronger economy and society. We desire to share the hope and love of Jesus holistically, impacting all areas of life.





IN 2013...

25

NEW CHURCHES  
WERE PLANTED

150

PASTORS  
WERE EQUIPPED  
AT CONFERENCES

15

LAY LEADERS  
WERE TRAINED



# PLANTING CHURCHES

## THE PROBLEM

While the restoring presence of Jesus is healing communities throughout India and Nepal, strong barriers persist. Local church planters must overcome isolation, lack of training, limited funding sources and persecution from other religious groups. All together, over 1 billion people are without the hope of Jesus, and 2,500 unreached people groups have never heard the name of Jesus.

## OUR RESPONSE

We believe the local church is the incarnation of Jesus, expressing God's love to the world. We work with local churches to raise up leaders to bless, serve and multiply the church. Since many of these local pastors have no college education or Bible training, equipping and training is one of our top priorities. Our training school, conferences and lay-leader training all serve to equip leaders for the work of starting churches and caring for people.

We also believe God intends for his church to multiply. With this in mind, ServLife provides financial support to church planters who are trained within one of our training schools. We commit to supporting these workers for at least five years with the objective that their church will become healthy and financially self-sufficient.



# CARING FOR CHILDREN



## THE PROBLEM

While India and Nepal have recently taken huge social and economic steps forward, poverty, trafficking, and health issues still leave millions of children vulnerable or abandoned. Many of these children are left with no alternative but to live on the streets, work in dangerous environments and abandon their education just to survive.

## OUR RESPONSE

We believe in helping to rescue and rebuild the lives of children who have experienced abuse, neglect and injustice. Through our homes for children, they live in a community where they are offered education, clothing, food and love.

ServLife currently operates five children's homes throughout Nepal and north India. The children who come to these homes have lost one or both parents, leaving them in need of the basic care and love that every child deserves. In addition to caring for children in our homes, we send hundreds of children to local schools through our scholarship program, opening the door to a bright future through education.



IN 2013...

100

CHILDREN WERE CARED  
FOR IN OUR HOMES

300

CHILDREN  
WERE EDUCATED

98

TEACHERS  
RECEIVED ONGOING  
TRAINING





IN 2013...

5

NEW MICRO-LOANS  
WERE DISTRIBUTED

2

NEW STAFF WERE HIRED  
TO EXPAND  
THE PROGRAM

100

PERCENT OF LOANS  
ARE SUCCESSFULLY  
BEING REPAYED



# FIGHTING POVERTY

## THE PROBLEM

In rural areas of India and Nepal, the average income is a meager \$1-2 per day. With an inflation rate near 10%, the cost of living doubles every 5 years, crippling impoverished families. The vicious cycle of poverty can be broken with just a small loan offered to help start a new business. Tragically, this simple solution is often inaccessible to entire communities in rural Nepal. Cornering the market, predatory lenders exploit impoverished families by charging exorbitant interest rates. We believe in fighting this injustice by providing an alternative.

## OUR RESPONSE

The HOPE Fund is our micro-finance initiative for those entrapped in extreme poverty. This fund provides a small, low-interest (1%) loan to help empower families. Whether it is for five pigs, ten goats, a water buffalo, or a sewing machine, a small investment can pave a way out of poverty for an entire family.

We work with local churches and appointed boards to identify applicants to receive the loans and manage the repayment. An average loan from the HOPE Fund ranges in amounts from \$300 to \$800, depending on the nature of the business start-up. A portion of the interest paid is returned to the borrower if the 2-3 year loan is repaid on time, and a larger portion is returned if paid off early. As soon as a loan is repaid, a new loan is given in its place, helping not just one family but entire villages escape extreme poverty.





## GET INVOLVED

### GO

Hop on a plane and see first-hand what God is doing in India and Nepal. Trips can vary in length and focus based on your group's strengths and abilities. You will use your gifts to impact lives around the world and return an advocate for the friends you meet overseas.

### GIVE

When you invest in God's work, lives are impacted for the Kingdom of God. Through sponsorship, you can build a lasting relationship with a child (\$30/mo) or pastor (\$60/mo). You can also fund specific projects, like a water buffalo for our HOPE Fund, a new home for our children or a bicycle for a pastor.

### SHARE

Your voice is one of the most powerful tools you have. Use it. Host a ServLife dinner, bring in a ServLife speaker to your church or organization, or spread the word through social media.

### PRAY

When you pray, we see God move. There is something truly amazing about believers across the globe bound together through prayer. For specific ways to pray, visit [servlife.org/pray](http://servlife.org/pray).

GO

GIVE

SHARE

PRAY



IN 2013...

79

PERCENT  
OF REVENUE  
WENT OVERSEAS

35

PERCENT MORE  
DONATIONS  
WERE RECEIVED

206

NEW DONORS  
PARTNERED WITH US

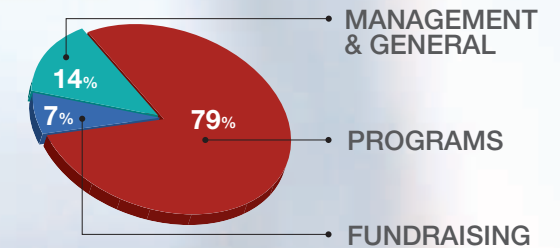


# 2013 FINANCIALS

**TOTAL REVENUE: \$657,675.77**

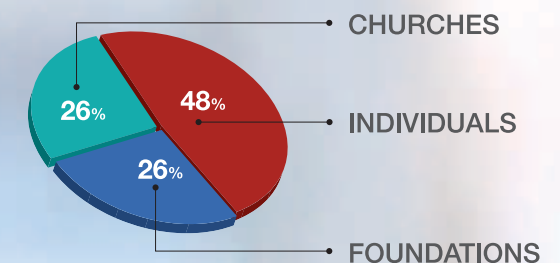
## OPERATING PERCENTAGES

While every single thing that we do is rallied behind our mission, we always want the bulk of our funding going overseas. We ensure those gifts are used wisely by investing in healthy management structures in the USA and abroad.



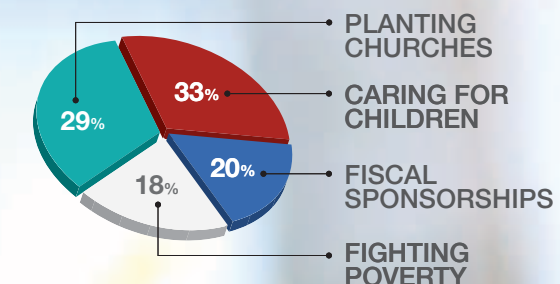
## REVENUE SOURCES

We are blessed to partner with hundreds of individuals, dozens of churches and several foundations. This balanced group of supporters ensures fiscal stability into the future.



## PROGRAM PERCENTAGES

All of our programs are vitally important to the communities they impact. The diverse disbursement of funds supports our value of sharing a holistic gospel.



\*Fiscal Sponsorships are partner projects that ServLife aids by providing financial oversight, prayer & consulting.